



Crushing and Screening Equipment



Crushing and Screening Equipment

ABOUT US

TERRA produces crushing, screening, washing and conveying equipment for the process of mining, quarrying and industrial plants. We combine experience, technology and qualified labor to keep the services at the highest level.



Experience

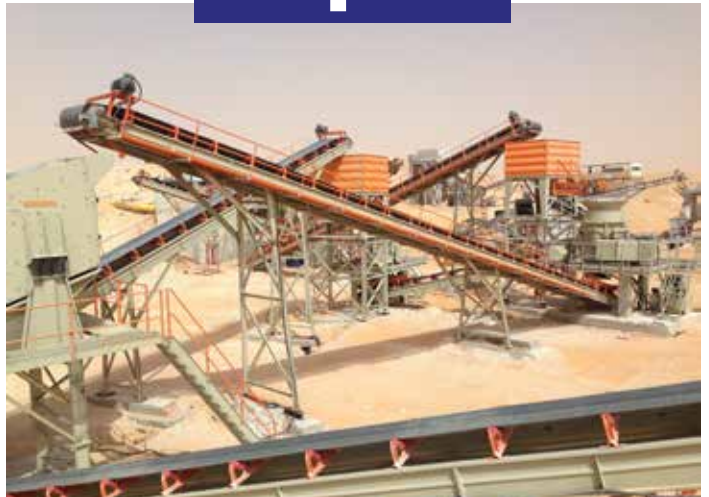


Qualified
Labor



Technology

Our equipments used in the mining field processes and in the quarrying to produce aggregate for concrete and asphalt plants, and as base materials of the railways and motorways. We design and produce our equipment considering the work safety, easy operation and maintenance for our customers.



OUR VISION

We want to make innovation a tradition of the company by carrying out regular product development studies for the needs of the sector, and thus to ensure that our customers' investments are more predictable.

OUR MISSION

TERRA provide full satisfaction by analyzing the needs of our customers in detail and developing solutions that go beyond expectations.

Our Quality Policy

TERRA's principle is to be at the highest class in the quality forever by using the developing technology and evaluating its customers demands and expectations. The quality policy of TERRA is to be the creator and not to be the follower of the developments in its field.

PRODUCTS

1. EQUIPMENTS

Crushers

- Jaw Crushers
- Primary Impact Crushers
- Secondary Impact Crushers
- Tertiary Impact Crushers
- Vertical Shaft Impact Crushers

Feeders

- Vibrating Grizzly Feeders
- Belt Feeders

Hoppers

- Hopper And Feeders
- Product Hoppers
- Aggregate Hoppers

Screens

- Vibrating Screens
- Dewatering Screens

Conveyors

- Belt Conveyors

Washers

- Screw Washer

Control Cabins

Mixers

2. SPARE PARTS

Vertical Shaft Impact Crushers

- Bottom / Upper Abrasion Plate
- Transition Abrasion Plate (Exterior)
- Transition Abrasion Plate (Middle)
- Distributor Plate
- Rotor Tip (Tungsten Carbid)
- Feeding Tube / Feed Eye Ring

Jaw Crushers

- Safety Plate Housing
- Fixed and Moving Jaw
- Side Liners / Spring Juncture Set

Vertical Shaft Impact Crushers

- Bottom / Counter Impact Plate
- Blow Bar / Blow Bar Holder
- Upper liner / Directer liner
- Side liner

Vibrating Screens

- Screen Tension Bolts
- Elek Gergi ve Kırıcı Emniyet Civatası
- Helicoidal Springs
- Bearing Housing
- Pulley
- Suspension Rubber
- Screen Mesh clamps/ Screen Mesh Clamps
- Screen U / T Rubber

Belt Conveyors

- Gearbox Pulley / Gearbox
- Rollers/ Impact Roller
- Drive Drum
- Belt Guiding System / Impact Bar
- Belt Connector
- Stations / Natural Magnet

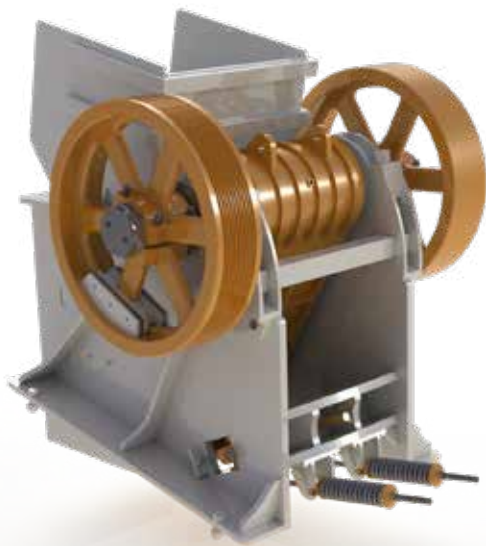
Crushers

JAW CRUSHERS

TJ series jaw crushers are mostly used as a primary crusher and they are compressive crushers crushes the materials while compressing it by the mean of its mobile and fixed jaw. It can not be obtained fine products from this crushers and the discharge opening's setting can be adjusted. These crushers are driven by an electrical motor via V-belt and pulley.

General Features

- Easy installation
- Easy operation and maintenance
- High performance and efficiency
- Adjustable Discharge Opening by manuel operated hydraulic pump



MODEL		EJ 02	EJ 03	EJ 07	EJ 11	EJ14	EJ 04	EJ12
Capacity	t/h	50 - 90	80 - 180	150 - 320	250 - 500	300 - 625	10 - 60	40 - 120
Feeding Opening	mm	610 X 380	900 X 650	1100 X 850	1.250 X 1.000	1.400 X 1.100	900 X 200	1.100 X 350
Discharge Opening	mm	40 - 140	50 - 150	70 - 250	100 - 300	125 - 350	20 - 80	30 - 100
Drive Motor	kW	30	75	132	160	200	30	55
Weigh	kg	6.000	11.250	28.800	42.750	46.200	5.750	10.800
L Dimension	mm	1.470	2.050	2.650	3.000	3.000	1.340	1.700
W Dimension	mm	1.580	2.050	2.750	3.000	3.090	1.850	2.250
H Dimension	mm	1.660	2.200	2.850	3.800	3.800	1.500	1.950

Crushers

PRIMARY IMPACT CRUSHERS

The TP series primary impact crushers are used as a primary crusher to crush soft or medium hard and non abrasive materials. The dimension of final crushed product can be determined by the settings of breaker panels. These crushers can be manufactured in different sizes for different capacity requirements. The crusher is driven by an electrical motor via V-belt and pulley.

General Features

- Easy installation
- Easy operation and maintenance
- High performance and efficiency
- Blow bars casted steel with 16 -18% manganese. (Chrome option is available)
- Easy acces to the inside of the crusher by hydraulically operated door assembly
- Easy adjustment of breaking plates by hydraulically operated system



MODEL		EP 01	EP 02	EP 03
Capacity	t/h	300 - 600	200 - 400	450 - 1000
Rotor Dimensions	mm	Ø1.400X1500	Ø1.400X1250	Ø1.600X2.000
Drive Motor	kW	250	200	400
Weight	kg	28.500	23.000	45.000
L Dimension	mm	4.075	3.850	5.000
W Dimension	mm	3.000	2.640	3.400
H Dimension	mm	3.600	3.680	5.200

Crushers

SECONDARY IMPACT CRUSHERS

TS series secondary impact crushers are designed specially to be used in crushing soft and medium abrasive materials. Thanks to its high chrome alloyed hammers and breaking bars these crushers are much more successful in crushing medium abrasive materials than the conventional impactors. The dimension of final product can be adjusted by the adjustable breaking bars. These crushers can be produced in several different sizes and are driven by an electrical motor via V-belt and pulley.

General Features

- Easy installation
- Easy operation and maintenance
- High performance and efficiency
- Wear resistant high chrome alloyed hammers
- Wear resistant high chrome alloyed breaking bars
- Easy, fast and safe access to the inside of the crusher by hydraulically operated door assembly
- Easy adjustment of breaking plates by hydraulically operated system



MODEL		ES 01	ES 02	ES 03
Capacity	t/h	100-180	140-220	180-320
Rotor Dimensions	mm	Ø1.120X1.000	Ø1.120X1.250	Ø1.120X1.500
Drive Motor	kW	160	200	250
Weight	kg	17.000	19.000	21.000
L Dimension	mm	3.500	3.500	3.500
W Dimension	mm	2.000	2.300	2.550
H Dimension	mm	3.070	3.070	3.070

Crushers

TERTIARY IMPACT CRUSHERS

TT series tertiary impact crushers are used in crushing the return of the soft and medium hard materials as a third crushing stage and to obtain high ratio of crushed sand. Due to its specially designed crushing chamber they produce much more percentage of fine product comparing with other impactors. The dimension of final crushed product can be controlled by mean of the adjustable braking bars. These crushers which are produced in several different sizes are driven by an electrical motor via V-belt and pulley.



General Features

- Easy installation
- Easy operation and maintenance
- High performance and efficiency
- High quality manganese alloyed hammers
- Easy replacable manganese alloyed breaking bars
- Easy, fast and safe acces to the inside of the crusher by hydraulically operated door assembly



MODEL		ET 01	ET 02	ET 03
Capacity	t/h	100-150	125-200	150-250
Rotor Dimensions	mm	Ø1.120X1.000	Ø1.120X1.250	Ø1.120X1.500
Drive Motor	kW	160	200	250
Weight	kg	14.500	16.250	17.750
L Dimension	mm	2.600	2.600	2.600
W Dimension	mm	1.950	2.280	2.580
H Dimension	mm	2.650	2.650	2.650

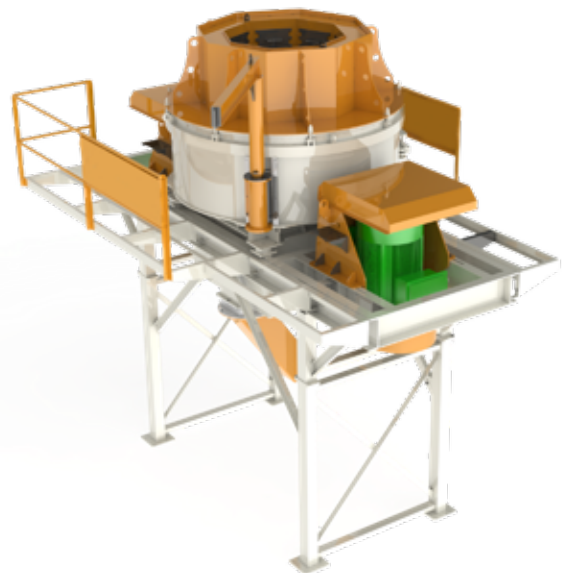
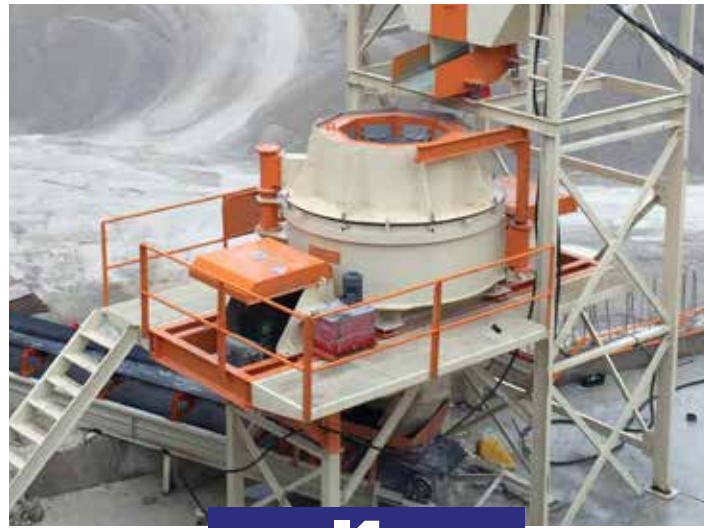
Crushers

VERTICAL SHAFT IMPACT CRUSHERS

TVS series vertical shaft impactors (VSI) are used as a second and third crushing stages for hard and abrasive materials such as basalt and river gravel. Because of their low operation costs, they are more suitable for crushing the hard and abrasive materials than other crushers. While some of the materials enters into the rotor, the rest of the flow is poured around the rotor. The materials are thrown with high speed thanks to the centrifugal force of the rotor and are crushed when they clash with the materials flowing around the rotor. These crushers which are produced in several different sizes are Driven by an electrical motor via V-belt and pulley.

General Features

- Easy installation
- Easy operation and maintenance
- High Capacity and performance
- Wear resistant tungsten carbide rotor tips
- High performance and with heavy duty bearings



MODEL		EV 750	EV 850	EV 950
Capacity	t/h	50-150	125-300	200-450
Rotor Diameter	mm	Ø750	Ø850	Ø950
Max. Feeding Dimension	mm	40	40	50
Drive Motor	kW	75-132	135-200	200-500
Weight	kg	9.750	12.000	14.750
Ød Dimension	mm	2.000	2.300	2.400
L Dimension	mm	4.500	5.100	5.500
W Dimension	mm	3.000	3.500	3.750
H Dimension	mm	4.750	4.900	5.080

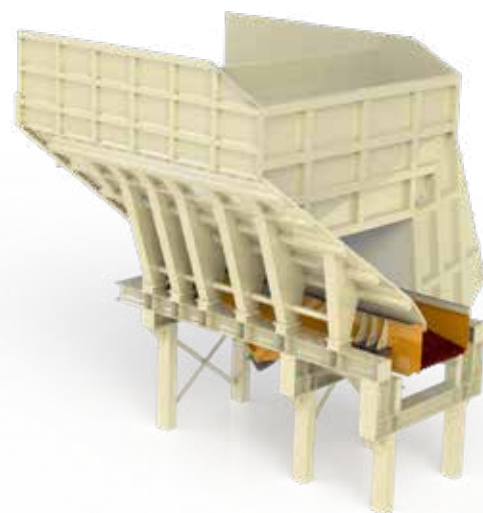
Feeders

VIBRATING GRIZZLY FEEDERS

The feeders which are designed with grizzly bars feed the material from its hopper to the primary crusher. The waste material and other fine impurities can be separated and removed from the process by the mean of adjustable grizzly bars or can be by-passed to maximize the capacity. The feeders are supported on the main chassis by heavy duty suspension springs and they are driven by a couple of electrical vibrators which their centrifugal force is adjustable by its eccentric Weights.

General Features

- Easy installation
- Easy operation and maintenance
- Driven by external electrical vibrators which their centrifugal force is adjustable
- Adjustable grizzly bars
- High hopper volume



MODEL		EG 06	EG 10	EG 09	EG 13	EG 18
Capacity	t/h	50 - 90	70 - 210	150 - 350	250 - 450	400 - 1000
Hopper's Volume	m ³	10	20	35	40	55
Feeder's Width (WF)	mm	600	950	1.200	1.350	1.800
Feeder's Length (LF)	mm	3.000	4.000	5.000	5.000	6.000
Drive Motor	kW	2 X 2,5	2 X 4	2 X 7,5	2 X 9,8	2 X 15
Weight	kg	9.450	11.500	18.000	19.300	25.000
L Dimension	mm	4.600	5.700	6.750	6.700	7.750
W Dimension	mm	3.250	3.600	3.850	4.000	5.000
H Dimension	mm	4.200	4.600	5.050	5.700	6.250

Feeders

BELT FEEDERS

The TBF series belt feeders are favorable to ensure a regular feeding for tertiary crushers. They consist of a hopper and a belt conveyor placed underneath. The belt feeder feeds the required amount of material. The speed of belt conveyor can be adjusted according to the required capacity. They are available in various sizes according to flow capacity. Depending on the height of the place to be used, they can be produced with different heights of legs or without legs.



General Features

- Easy installation
- Easy operation and maintenance
- Easy and simple driving system
- Adjustable feeding capacity

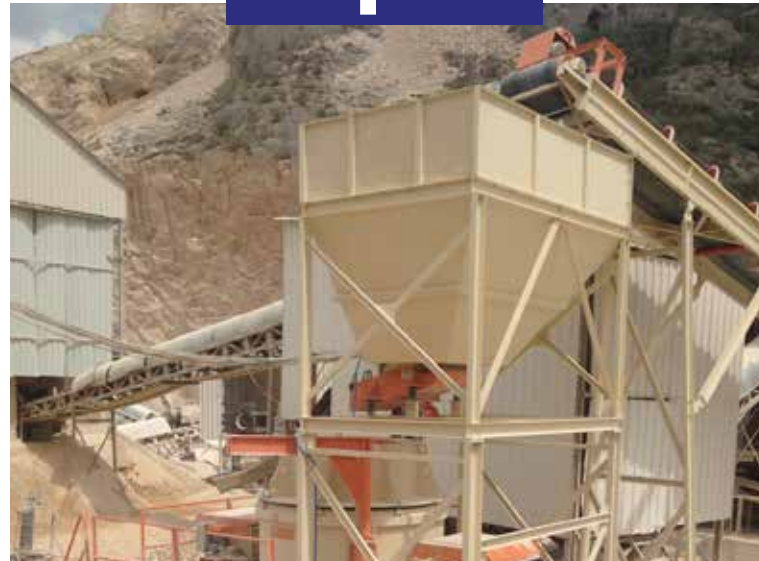
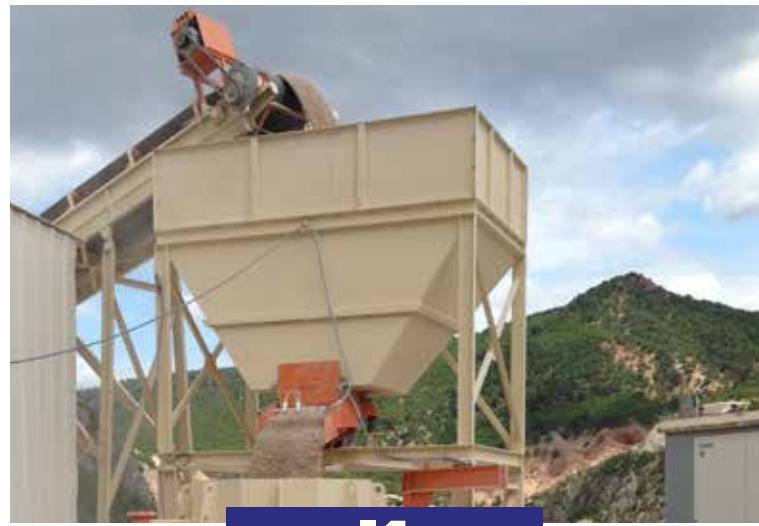


MODEL		EBH 0810	EBH 1015	EBH 1220
Belt Width (Wb)	mm	800	1.000	1.200
Belt Length (Lb)	mm	2.500	2.500	2.500
Hopper's Volume	m ³	10	15	20
Capacity	t/h	150-250	175-300	200-350
Drive Motor	kW	3	4	5,5
Weight	kg	4.000	4.700	5.200
H Dimension	mm	3.700	4.400	5.200
L Dimension	mm	4.220	4.220	4.220
W Dimension	mm	3.450	3.450	3.450

Hoppers

HOPPER AND FEEDERS

"THF series vibrating feeders are designed to ensure a regular feeding for secondary crushers, tertiary crushers or vibrating screens. They consist of a hopper and a vibrating feeder placed underneath. The vibrating feeder is supported on the main chassis by heavy duty suspension springs and feeds the material with an adjustable vibromotor. Depending on the capacity, material type and feeding height, it can be manufactured with legs at various heights and volumes."



General Features

- Easy installation
- Easy operation and maintenance
- Easy and simple driving system
- Easy replacement of rubber/hardox wear plate



MODEL		EFH 0610	EFH 0615	EFH 0625	EFH 0820	EFH 1025
Feeder's Width (Wf)	mm	650	650	650	800	1.000
Feeder's Length (Lf)	mm	1.200	1.200	1.200	1.600	2.000
Hopper's Volume	m ³	10	15	25	20	25
Capacity	t/h	100 - 220	100 - 220	100 - 220	150 - 250	200 - 300
Drive Motor	kW	1,5	1,5	1,5	2 X 1,5	2 X 2,2
Weight	kg	1.600	2.200	2.400	2.600	3.300
H Dimension	mm	2.280	4.000	4.200	4.680	4.800
L Dimension	mm	2.120	2.120	2.220	2.320	2.320
W Dimension	mm	3.200	3.200	3.420	3.420	3.800

Hoppers

PRODUCT HOPPERS

TH series product hoppers are designed to enable to load the products over trucks through the discharge chutes. Discharge chutes can be opened and closed with the pneumatic pistons from the control panels by the operator. These hoppers facilitates the loading process and thus reduces the operational costs of the crushing plant. The hoppers can be designed for different requirements of volume.



General Features

- Easy installation
- Easy operation and maintenance
- Easy and simple Drive system
- Vibromotor against blockage
- Pneumatic pistons

MODEL		EH 25	EH 45	EH 75	EH 100
Hopper's Volume	m ³	25	45	75	100
Discharge Opening Dimensions	mm	2X300X1.000	2X500X1.000	2X500X1.200	2X500X1.300
H1 Dimension	mm	7.780	8.120	9.000	9.000
L Dimension	mm	2.470	4.550	5.050	5.050
W1 Dimension	mm	3.920	4.350	4.850	5.050
H2 Dimension	mm	3.680	3.680	3.680	3.680
W2 Dimension	mm	3.320	3.550	4.050	4.800

Hoppers

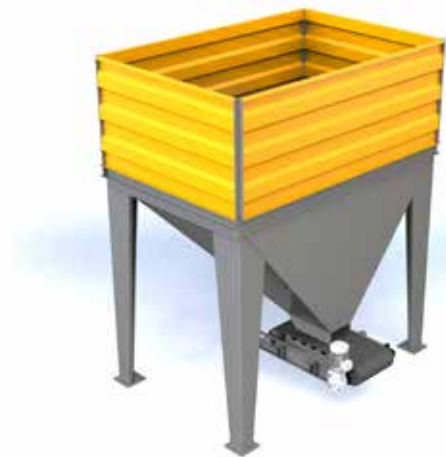
AGGREGATE HOPPERS

YAH series feeding hoppers serve as intermediate stocking for regular material flow in the facility. Vibrating or belt feeders can be designed for regular feeding of material under the hoppers. The capacity of the hopper and the feeding capacity of the feeders can be designed according to the need to ensure the regular flow in the facility.



General Features

- Ease of installation
- Ease of usage
- User-friendly system
- Adjustable feeding capacity through control panel



MODEL		YAH 0617
Belt Width (Wb)	mm	600
Belt Length (Lb)	mm	1.250
Hopper Volume	m ³	17
Feeding Capacity	t/h	500
Motor Power	kW	4
Weight	kg	2.500
H Dimension	mm	4.170
L Dimension	mm	2.900
W Dimension	mm	3.450

Screens

VIBRATING SCREENS

"In a crushing plant the final products are obtained as a mixture, TIS series vibrating screens are designed to classify these products to the required sizes in high efficiency. The intensity of the vibration in these screens, which effects the separation by the inclined surface and vibration, can be adjusted by the eccentric weights mounted on rotating shaft. These screens are available with different sizes and capacities. The vibrating screens are driven by an electrical motor via V-belt and pulley."



General Features

- Easy installation
- Easy operation and maintenance
- Easy and simple driving system
- Adjustable vibration intensity by eccentric weights
- Easy and fast replacement of screening media



MODEL		EE 1030	EE 1240	EE 1650	EE 2050	EE 2060	EE 2070	EE 2470	EE 2480
Screen Width (Ws)	mm	1.000	1.200	1.600	2.000	2.000	2.000	2.400	2.400
Screen Length (Ls)	mm	3.000	4.000	5.000	5.000	6.000	7.000	7.000	8.000
Screening Area	m ²	3	4,8	8	10	12	14	16,8	19,2
Drive Motor	kW	5,5	7,5	11	18,5	22	30	2X18,5	2X22
Weight	kg	3.200	5.700	8.400	11.800	14.500	15.750	18.300	20.700
L Dimension	mm	4.500	5.750	7.450	8.250	8.500	9.500	10.700	11.800
W Dimension	mm	2.580	2.950	4.170	4.550	4.550	4.550	4.950	4.950
H Dimension	mm	4.250	4.700	5.950	6.200	6.750	7.350	7.350	7.450

Screens

DEWATERING SCREENS

TDS series of dewatering screens are designed to gain fine materials from the water after the washing process. This dewatering screens reduce the humidity to a very low rate that it even reduces the water consumption in the washing plant. The water separated from the materials can be recycled into the hydrocyclones to gain even more fine materials. The dewatering screens are available with polyurethane screening media which provides a great efficiency and longer life of operation for wet screening process.



General Features

- Easy installation
- Easy operation and maintenance
- Lower cost of investment and operation
- YHigh Capacity and efficiency

MODEL		EDS1230	EDS1635	EDS2040
Capacity	t/h	50-70	80-100	110-140
Screen Dimensions	mm	1.200X3.000	1.600X3.500	2.000X4.000
Screen Motor	kW	2X4	2X7,5	2X9,8
Pompage Motor	kW	45	55	75
Hydrocyclone Dimension	mm	Ø500	Ø660	Ø840

Conveyors

BELT CONVEYORS

TC series belt conveyors which have a modular design are used to carry the materials from a process to another in the crushing plant and for the stockpiling of the final products. They are produced in different width options depending on the capacity and in different length options according to the requirement. The belt conveyors are driven by an electrical motor and shaft mounted reducer gearbox via V-belt and pulley.



General Features

- Easy installation
- Easy operation and maintenance
- Easy and simple driving system
- Easy and simple driving system



MODEL		EB 06	EB 08	EB 10	EB 12
Belt Width	mm	600	800	1.000	1.200
Capacity	t/h	125	220	450	650
W Dimension	mm	950	1.150	1.350	1.550
H Dimension	mm	420	420	420	420

Washers

SCREW WASHER

"The screw washers available in various dimensions and in single or twin screw configurations. They are used for dewatering and separating the fine materials from water.

The fine aggregates are precipitated down and pulled to the discharge chute and removed out of the classifier by the spiral screws, and the water is flowed through its washout opening and drained to the precipitation pool or out of process. Screw washers driven by geared motors via chain. The screws are equipped with replaceable rubber wear shoes."



General Features

- Easy installation
- Easy operation and maintenance
- Easy and simple driving system
- Easy replacement of rubber wear shoes



MODEL		EC 0501	EC 0601	EC 0801	EC 0502	EC 0602	EC 0802
Helix Diameter	mm	Ø500	Ø600	Ø800	Ø500	Ø600	Ø800
Capacity	m ³ /h	13-20	19-30	30-55	26-40	38-57	57-77
Drive Motor	kW	4	5,5	11	2X4	2X5,5	2X11
Length	mm	5.000	6.000	8.000	5.000	6.000	8.000
Weight	kg	1.600	2.500	4.600	2.800	5.250	7.750
Hi Dimension	mm	1.350	1.500	1.700	1.350	1.500	1.700
Ho Dimension	mm	1.200	1.500	2.100	1.200	1.500	2.100
L Dimension	mm	5.300	6.300	8.500	5.300	6.300	8.500
W Dimension	mm	1.420	1.520	1.750	2.050	2.250	2.750

CONTROL CABINS

"The isolated and air conditioned cabin, which includes control panel and piano command table allows to control whole the plant. The control panel includes the main power switch and other electrical command devices. The control system is produced specific for every plant. Soft – Starter or Star / Delta start system is used for crushers and delta start for other equipments. In case of need a frequency converter can be used."



General Features

- Easy maintenance
- Easy, practical operation and control
- Reliable system in case of emergency

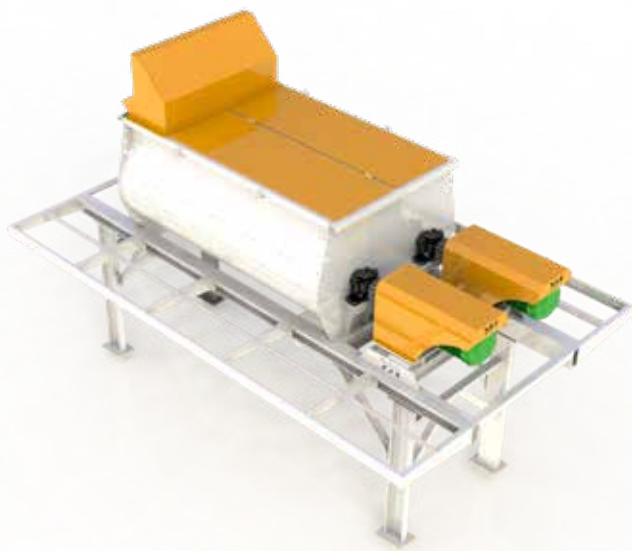


MIXERS

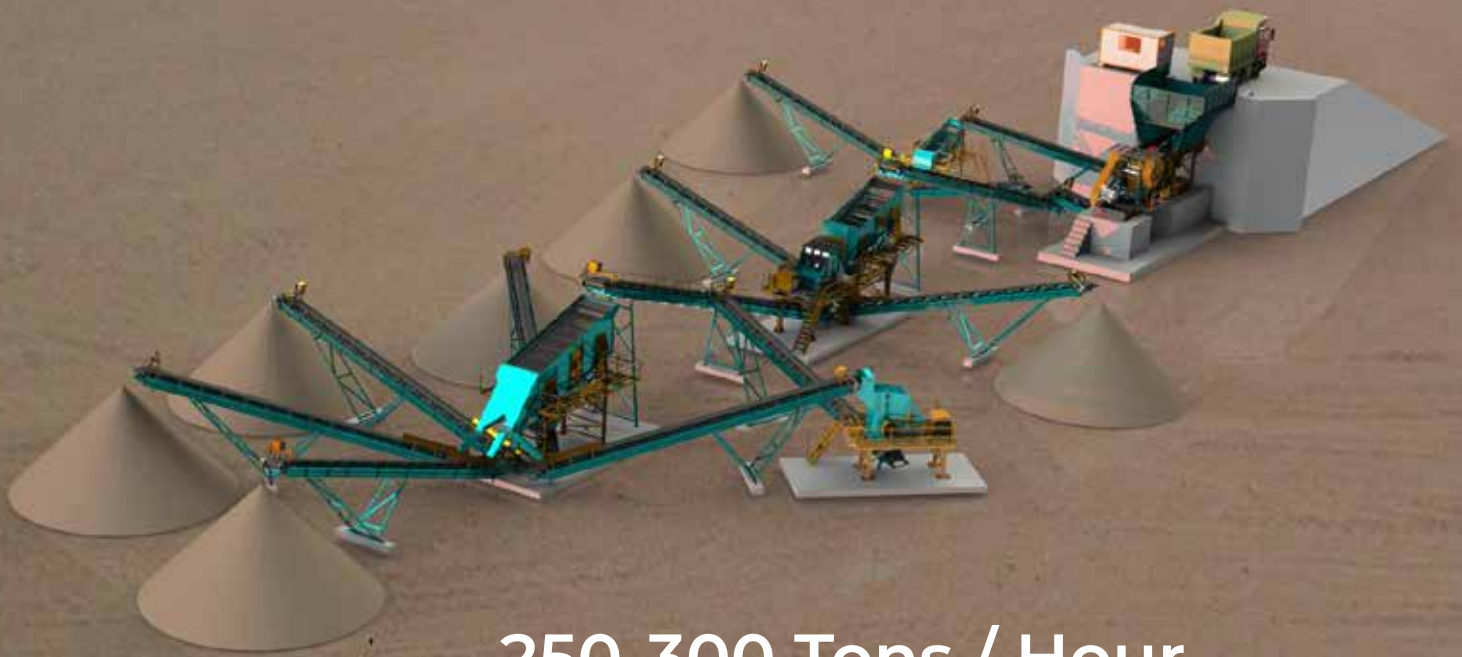
YM Series mechanical stabilization plant mixers are designed as double horizontal shaft and continuous type. Thanks to its large dimensions and the mixture it ensures the homogeneity of the mixture. It has sprinklers to add water to the mixture.

General Features

- Easy maintenance
- Long-lasting working opportunity
- Easy operation and maintenance



MODEL		YM8025T
Mixer Dimensions	mm	Ø800x2.500x2
Capacity	t/h	400-600
Motor Power	kW	2x22
Weight	kg	5.700
H Dimension	mm	3.520
L Dimension	mm	4.950
W Dimension	mm	3.060



250-300 Tons / Hour

PLANTS

Hour Stationary Crushing and Screening Plant



300-350 Tons / Hour

PLANTS

Hour Stationary Crushing and Screening Plant

SPARE PARTS

Jaw Crusher Spare Parts



Abrasion Plate



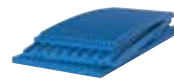
Jaw Cleat



Jaw Spring



Jaw Setting Block



Jaw Crusher Jaw



Safety Plate



Fixed Jaw Sledge

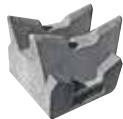


Spring Juncture Set

Impact Crusher Spare Parts



Hammer



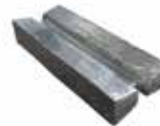
Director Liner



Blow Bar Holder



Upper Jiner



Tertiary Hammer



Side Liner

Vertical Shaft Crusher Spare Parts



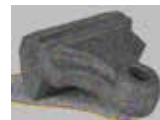
Feed Eye Ring



Feeding Tube



Distributor Plate



Crusher Spare Parts



Middle Transition Plate



Transition Upper Abrasion Plate



Upper Abrasion Plate

Screens Spare Parts



Jaw cleat



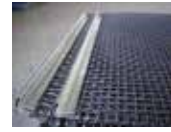
Pulley



Bearing Housing



Screen T Rubber



Screen Meshes

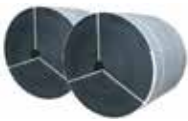


Screen U Rubber



Kauçuk Takoz

Conveyor Spare Parts



Belt Rollers



Impact Roller



Natural Magnet



Belt Connector



Conveyor Brake



Hinged Fastener



Metal Detector



Rollers



Scraper



Drive Drum





Crushing and Screening Equipment

With years of
experience...



Pınarbaşı Mah. Lüks Sokak Lüks Apt. No: 4 İç Kapı No: 3
Sincan/ ANKARA



sales@terra-teknik.com



0534 406 61 23

